

# Learning with a PLD

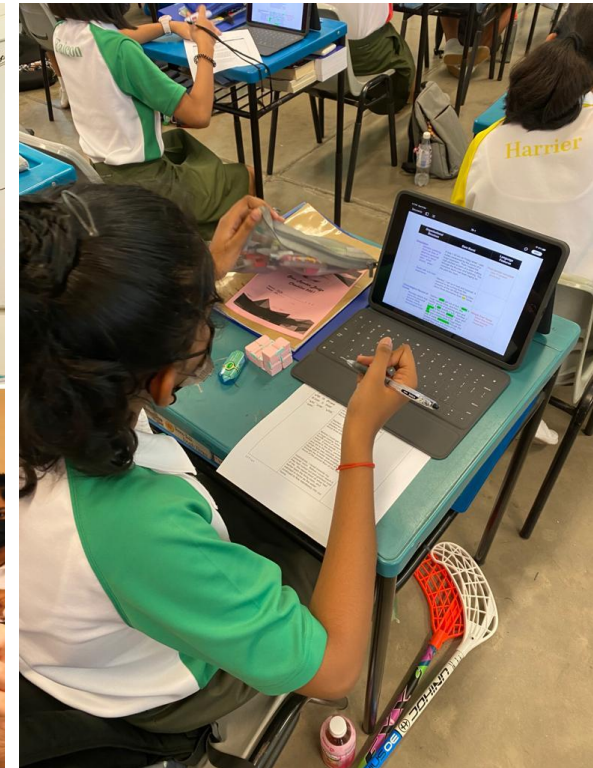
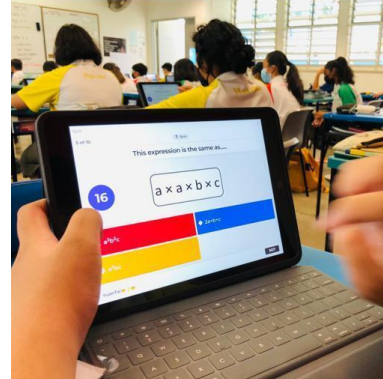
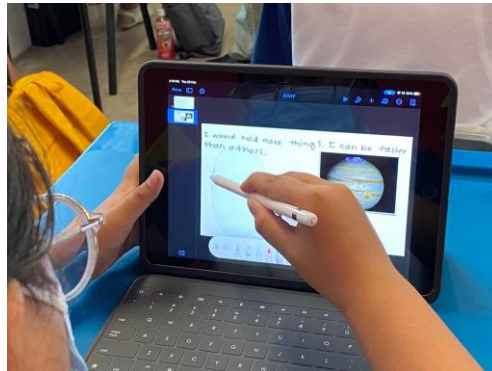
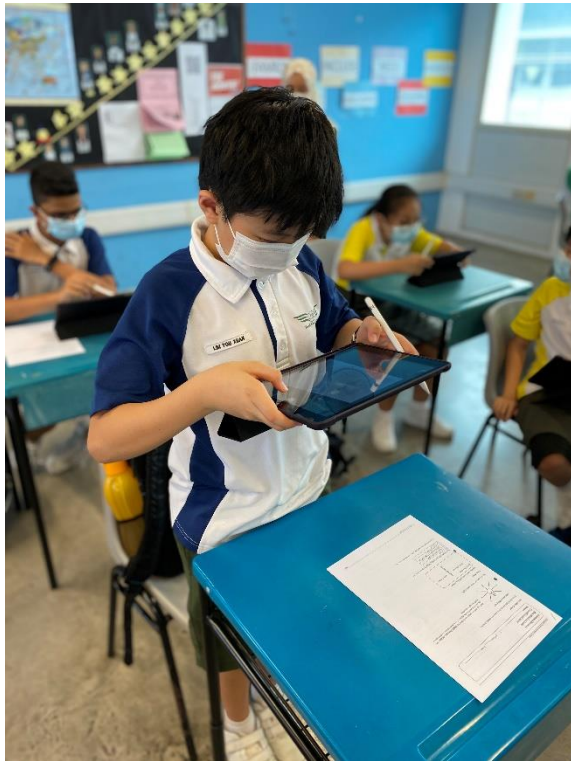
## Changkat Changi Secondary School

*Our Programmes*

# How will your child use the Personal Learning Devices?

At **CCSS**, your child will be...

*Excited to learn in a Blended Approach*



# How will your child use the Personal Learning Devices?

At **CCSS**, your child will be...

*Excited to learn in a Blended Approach*



# How will your child use the Personal Learning Devices?

At **CCSS**, your child will be...  
*applying their learning via*



Student-centered Opportunities for  
Aerospace Industries



# How will your child use the Personal Learning Devices?

At **CCSS**, your child will be...

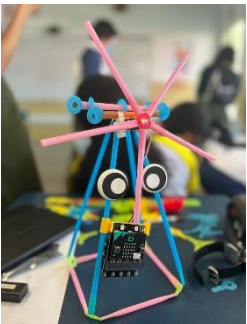
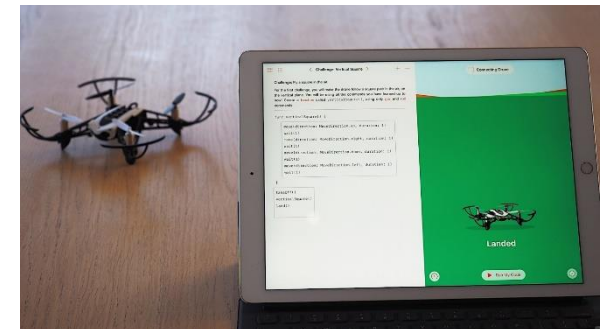
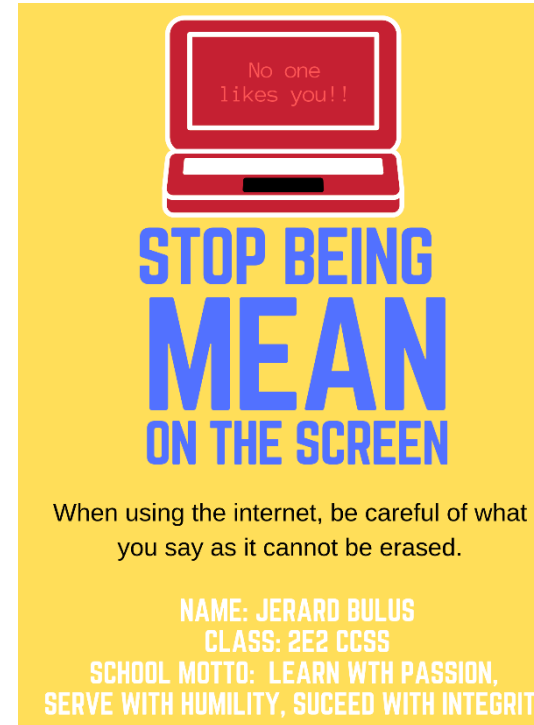
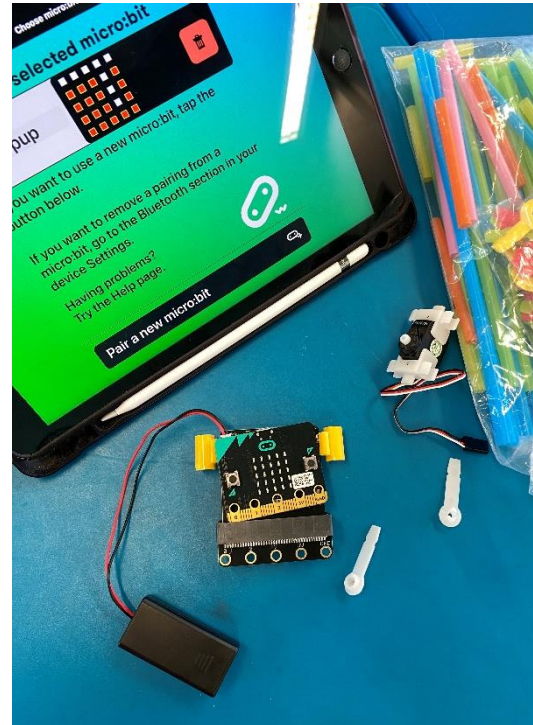
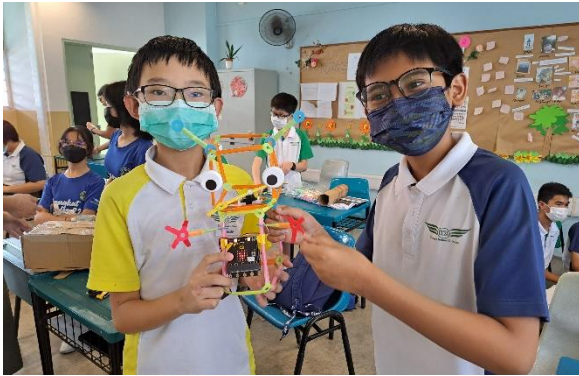
*Developing their 21<sup>st</sup> CCs &  
be discerning users of technology*



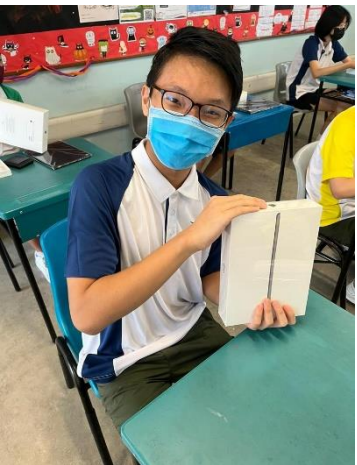
# How will your child use the Personal Learning Devices?

At **CCSS**, your child will be...

*Developing their 21<sup>st</sup> CCs &  
be discerning users of technology*



# 2022 Sec 1 PLD Rollout




# **Supporting Students in the Safe and Effective Use of the Devices**

# Supporting Students in the Safe and Effective Use of the Devices

The school has measures in place to enable a safer digital environment for learning with the use of PLDs, e.g.

- Classroom management and routines
- Educating students on Cyber Wellness
- Partnering parents/guardians to ensure that students are well-supported in their use of technology for learning
- Device Management Application (DMA)


# Classroom Management and Routines




Through School To Nation  
Changkat Changi Secondary School

**PERSONAL  
LEARNING DEVICE  
THE...  
CCSS WAY**


.....




**C**harge PLD fully  
Charge your device fully before coming to school




**C**yber Wellness  
When using your PLD :  
**SENSE** - Stop and identify the possible risks of harmful behaviours online and learn how to protect oneself.  
**THINK** - Analyse, evaluate and reflect on the online situation.  
**ACT** - Translate understanding into action so as to be safe and have a positive presence online.



**S**ecurity  
Check that your PLD is kept in your bag when not in use.  
Remember your password and keep it safe.



**S**creen  
**Screen Down** : Place the screen facing down when greeting and when paying full attention to the teacher's instructions



Let's remind each other !  
Take good care of your PLD and HAVE FUN learning

# Cyber Wellness Education

## **Educating students on Cyber Wellness**










MOE has made significant changes to the Character and Citizenship Education. Cyber Wellness lessons will feature significantly in the CCE2021 lessons.

Topics covered in the Cyber Wellness lessons include:

- Cyber Use
- Cyber Identity
- Cyber Relationships
- Cyber Citizenship
- Cyber Ethics

# Cyber Wellness Education

The school also has strategies to enable school-wide implementation of CCE. These include:

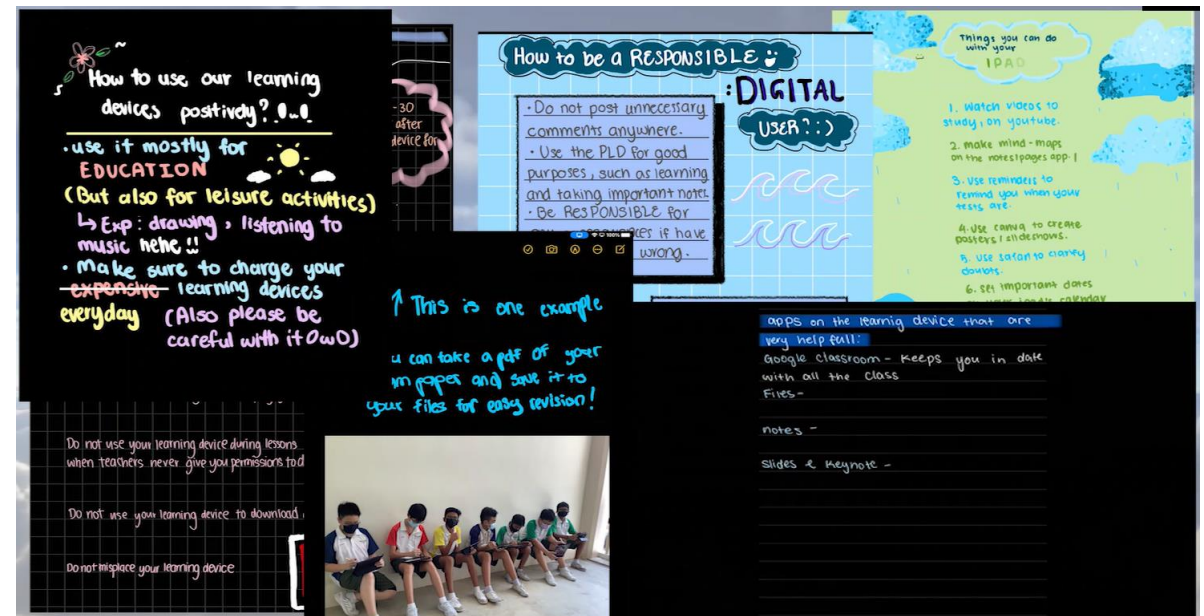
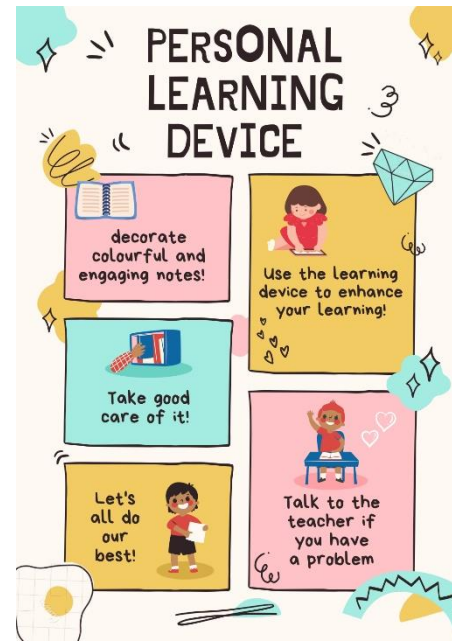
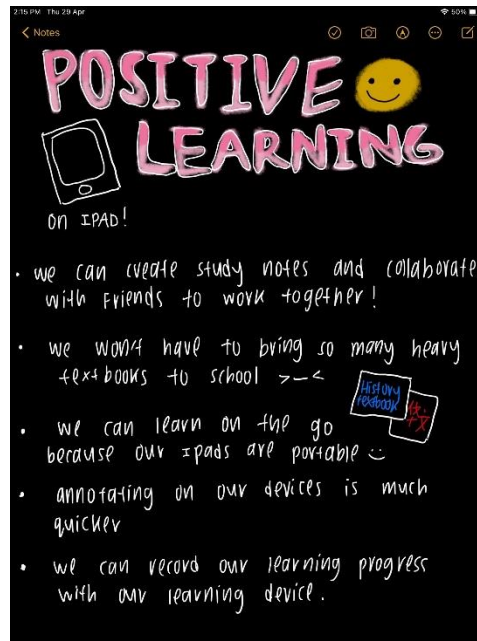
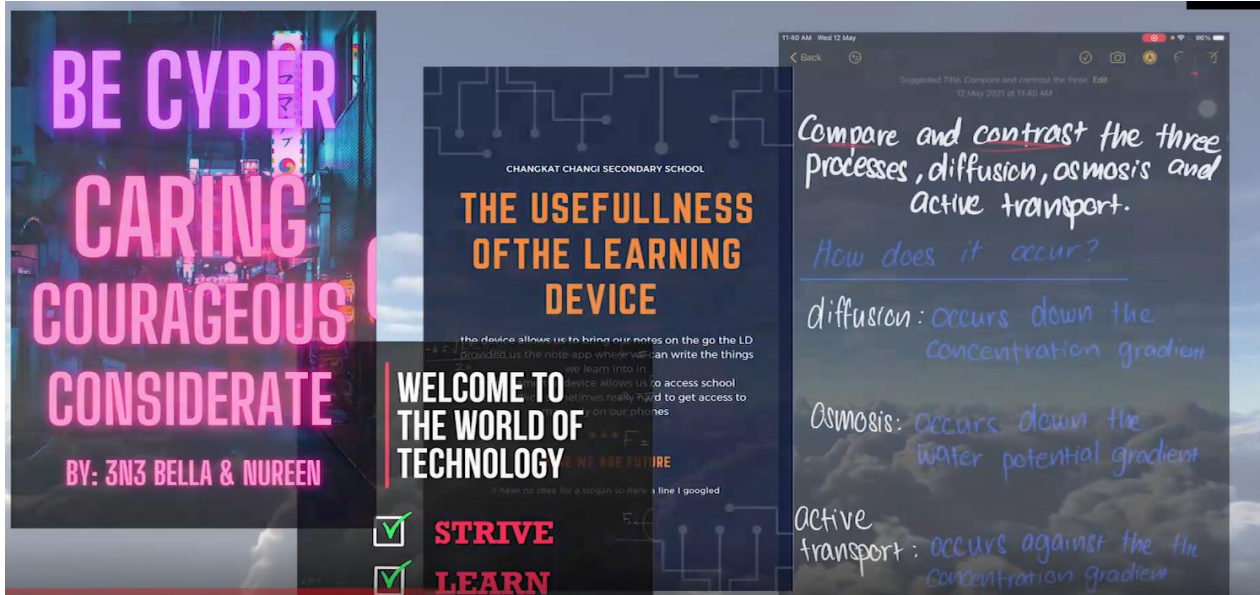
<b>Workshops</b>	  
<b>Seminars</b>	  
<b>Competitions</b>	  

# Cyber Wellness Education

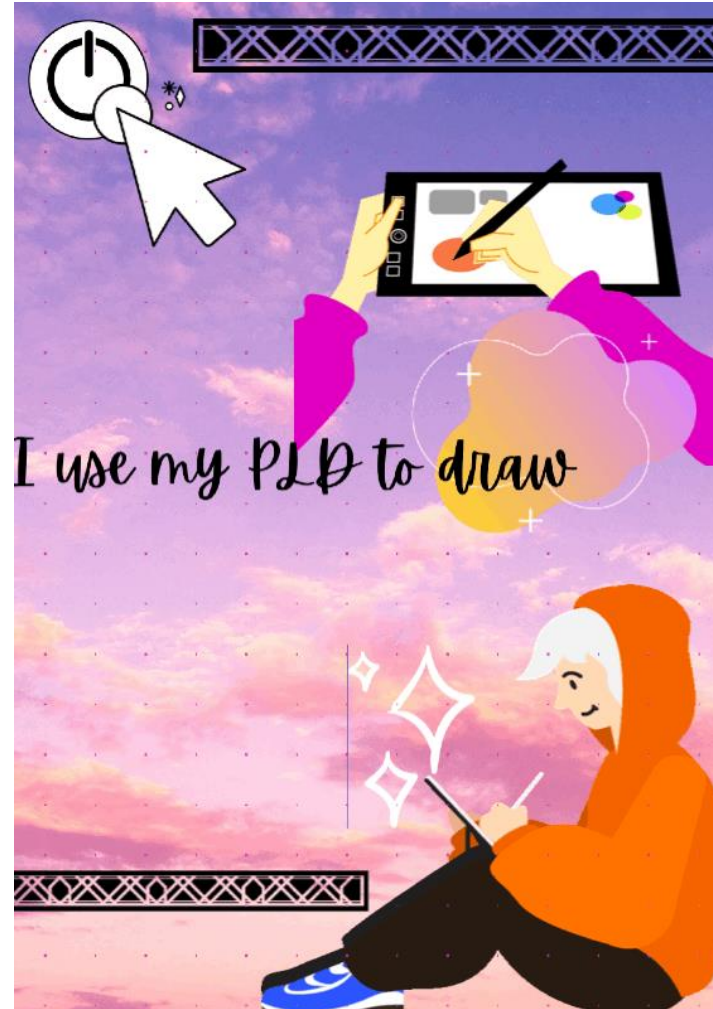
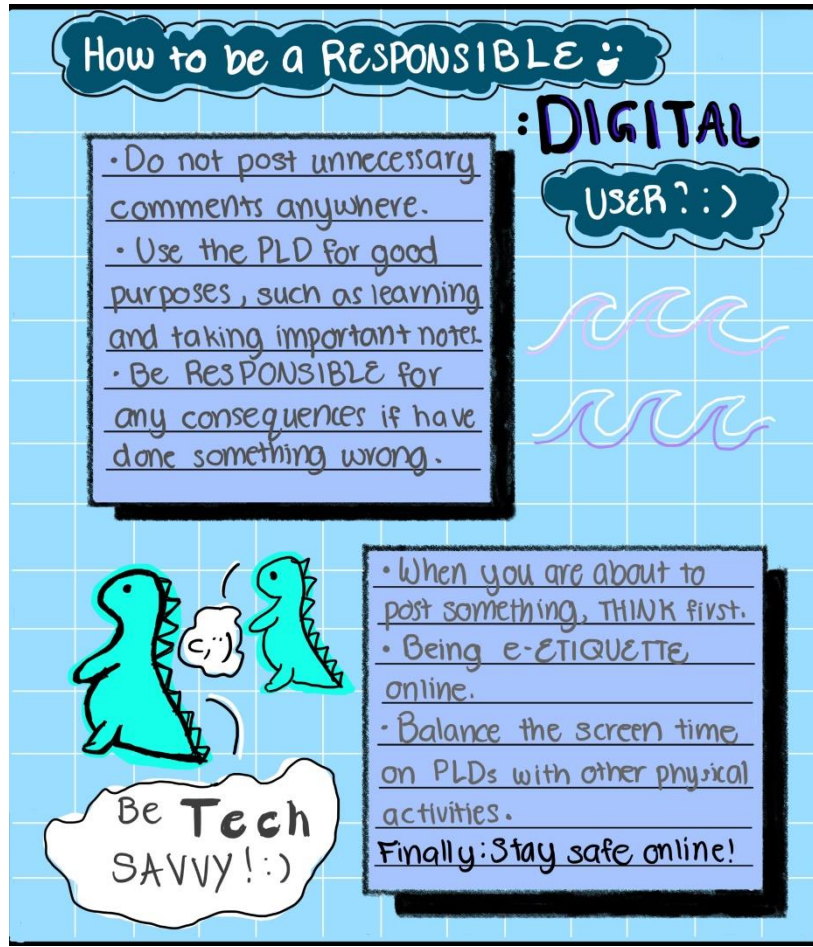
## 2022 Digital Experience Week

- Students learnt the functions of the PLDs
- Created multiple digital artifacts to demonstrate the positive use of the PLDs in their learning
- Many students found how useful the Apple Pencil is to showcase their creative side and productivity purposes.

# Cyber Wellness creations from our Changkateers



# Cyber Wellness creations from our Changkateers



# Parents'/Guardians' Role

- We would like to partner parents/guardians to ensure that students are well supported in their use of technology for learning.
- As parents/guardians, you can help in the following ways:
  - Model good digital habits for your child/ward e.g. parents/guardians not using devices during family meals.
  - Know your child/ward well, and have conversations with your child/ward about safe and responsible use of technology.
  - Set ground rules for internet/device usage.
  - Guide your child/ward to use productivity tools using his/her PLD, to organise information and simplify tasks for efficiency.

# **Role of the DMA in Providing a Safer Digital Environment for Learning**

# Device Management Application Installation

- Your child's/ward's PLD will be installed with a Device Management Application (DMA) to provide a safer digital environment for learning.
- Installation of the DMA will be performed after the collection of the device. Students will be guided on the installation.
- This applies to both devices purchased through the school and pre-existing student-owned devices.
- The DMA will be **funded by MOE** and will be **uninstalled** from the device **when your child/ward graduates/leaves the school**.

## In-School DMA Settings (Default)

Schools will determine DMA settings for **in-school use**. As a default, these settings will continue to be in place after school as well:

- MOE and the school will set the level of web content filtering, including filtering out objectionable content or content that may not be conducive to teaching and learning (e.g. social media, pornography, gambling, or websites containing extremist content)
- Students will be able to use the device from **6.00 a.m. to 5.00 p.m** daily
- The school will determine the apps and programs to be installed to support teaching and learning

# Providing Parents/Guardians with Greater Choice for After-School PLD Use

*The school will provide parents/guardians with more information on exercising the options.*

Default	Option A	Option B
<b>In-school DMA settings will continue after school hours</b>	<b>Parents/Guardians can modify the DMA settings after school hours</b>	<b>Parents/Guardians can choose to disable DMA after school hours</b>
For parents/guardians who want their child's/ward's use of the devices to be restricted only to teaching and learning, and prefer to leave it to the school to decide on DMA settings after school hours.	For parents/guardians who want more leeway over the use of the device, and prefer to take charge of the level of restrictions for their child's/ward's use of the device after school hours.	For parents/guardians who do not want their child's/ward's use of the device to be regulated by DMA after school.

- Having default school settings continue after school hours is the best option for parents/guardians who prefer not to, or do not feel ready to manage their child's/ward's device use on their own.
- Parents/guardians can request to change their choice of DMA settings at any time.

# Providing Parents/Guardians with Greater Choice for After-School PLD Use

	Default	Option A	Option B
<b>Protecting students from objectionable content</b>	MOE/school sets level of web content filtering	Parents/Guardians can apply additional content filtering	No content filtering
<b>Reduce distractions from learning through control of applications</b>	Parents/Guardians and students <u>unable</u> to install additional applications	Parents/Guardians and/or students can install applications after school hours, but these applications are disabled during school hours	
<b>Limit screen time</b>	School sets hours during which students are able to use the device online	Parents/Guardians can modify the amount of screen time*	No control over screen time

\*Screen time limits set by the school will override parents'/guardians' settings during school hours.

# Providing Parents/Guardians with Greater Choice for After-School PLD Use

	Default	Option A	Option B
<b>Parent/guardian account</b>	Provided to allow monitoring of PLD activities after school hours		Not provided
<b>Monitor students' cyber activities</b>	Parents/Guardians can track their child's/ward's browser history after school hours		<p>Parents/Guardians will <b><u>not</u></b> be able to monitor or control their child's/ward's use of the device through the DMA after school hours</p> <p>No data* will be collected during use of PLD after school hours</p>

# DMA Options Explained (Weekday School Term)



	6 am - 5 pm	5pm - 11pm	11pm – 6am (Sleep Hours)
<b>Default Option</b>	<b>DMA Settings Applied (School Decided)</b> <ul style="list-style-type: none"><li>• Apps that school use for T&amp;L</li><li>• Whitelist and blacklist filtering applied</li></ul>	<b>DMA Settings Applied (School Decided)</b> <ul style="list-style-type: none"><li>• Apps that school use for T&amp;L</li><li>• Whitelist and blacklist filtering applied</li></ul>	<b>SLEEP TIME</b> Device is Locked
<b>Option A</b>	<b>DMA Settings Applied (School Decided)</b> <ul style="list-style-type: none"><li>• Apps that school use for T&amp;L</li><li>• Whitelist and blacklist filtering applied</li></ul>	<b>Modified DMA Settings Applied</b> <ul style="list-style-type: none"><li>• <b>Parents modify settings in the DMA portal</b></li></ul>	<b>SLEEP TIME</b> Device is Locked
<b>Option B</b>	<b>DMA Settings Applied (School Decided)</b> <ul style="list-style-type: none"><li>• Apps that school use for T&amp;L</li><li>• Whitelist and blacklist filtering applied</li></ul>	<b>DMA Removed = No Restriction</b>	

# DMA Options Explained (Weekends and Holidays)



	6am - 11pm	11pm – 6am (Sleep Hours)
Default Option	<div>DMA Settings Applied (School Decided)<ul style="list-style-type: none"><li>• Apps that school use for T&amp;L</li><li>• Whitelist and blacklist filtering applied</li></ul></div>	<div>SLEEP TIME Device is Locked</div>
Option A	<div>Modified DMA Settings Applied<ul style="list-style-type: none"><li>• Apps that school use for T&amp;L</li><li>• Whitelist and blacklist filtering applied</li><li>• <b>Parents modify settings in the DMA portal</b></li></ul></div>	<div>SLEEP TIME Device is Locked</div>
Option B	<div>DMA Removed = No Restriction</div>	

# Deciding on the Choice of After-School DMA Option

What is best for your child?

**Default Option**

**Option A**

**An environment that is:**

- **Contained**
- **Encouraging healthy screen habits**
- **Structured**
- **Sheltered against harmful content**

# Deciding on the Choice of After-School DMA Option

What is best for your child?

## Option B

When left unsupervised, is an environment that is:

- Exposed
- Unregulated
- Potentially harmful

# Deciding on the Choice of After-School DMA Option

Parents/guardians may wish to consider the following questions before deciding on the choice of after-school DMA option which is best for your child's/ward's learning.

## 1. Child's/ward's current device usage habits

- How much time does my child/ward spend on their device?
- How well is my child/ward able to regulate their device usage on their own?
- Does my child/ward get easily distracted while doing online learning?

## 2. Parents'/Guardians' involvement

- How confident and familiar am I with managing my child's/ward's cyber wellness?
- Are there existing routines and open conversations on the use of the Internet at home?
- Am I aware of how to prevent different types of cyber threats that my child/ward might face?



*Have a conversation with your child/ward to talk about which setting is best for your child's/ward's learning.*

# Data Collected by the DMA

The DMA does **NOT** collect any of the following data:

- Login IDs and passwords entered into websites or into any applications
- Actions performed (e.g. posts, online comments, items added to a shopping cart, etc.) when visiting websites and using apps
- Documents and photos stored in the PLDs
- PLD location
- Webcam videos and microphone recordings

# Additional Resources for Parents

To support you in keeping your child/ward safe online, you may refer to these additional resources:

- Parent Handbooks (I) and (II) on Learning with a Personal Learning Device (shared by the school)
- Parent Kit on Cyber Wellness for Your Child (<https://go.gov.sg/moe-cyber-wellness>)
- Schoolbag article 'Keeping our teens safe online' (<https://www.schoolbag.edu.sg/story/keeping-our-teens-safe-online>)
- MOE Cyber Wellness Programme (<https://www.moe.gov.sg/programmes/cyber-wellness/>)
- Media Literacy Council (<https://go.gov.sg/better-internet-sg>)
- National Library's Learning & Information Literacy Resources (<https://sure.nlb.gov.sg/>)
- TOUCH Community Services (<https://help123.sg>)

# Device and Funding Information

# Changkat Changi Secondary School's Personal Learning Device



Apple iPad 9<sup>th</sup> Gen  
(64GB Wi-Fi)  
Apple Pencil (1<sup>st</sup> Gen)

The school will be using the  
**Apple iPad 9<sup>th</sup> Gen**  
**(64GB Wi-Fi)** for teaching and  
learning.

**Total Cost with GST: \$857.50**

# Personal Learning Device Bundle\*

## Device Bundle

### What it includes

- Apple iPad (9<sup>th</sup> Gen, 64GB Wi-Fi)
- Apple Pencil (1<sup>st</sup> Gen)
- **Logitech Rugged Combo with Keyboard**
- Insurance and Warranty

### What it includes

#### **[Enhanced Device Bundle]**

- 3-year warranty and 3-year insurance
- 2 repairs or 1 replacement claim

On top of the Apple Care+  
Warranty found commercially

# Funding Support for Singapore Citizen (SC) Students

- **The cost of the device bundle can be paid using your child's/ward's Edusave account**, after setting aside provision for payment of second-tier miscellaneous fees.
- To ensure the affordability of devices, MOE has provided Edusave top-ups of **\$200 in 2020** and **\$200 in May 2021** (as part of the Household Support Package announced in Budget 2021), to all eligible SC students in primary and secondary schools.
- This is on top of the **annual \$290** credited into the Edusave account for Secondary School students and \$230 for Primary School students.

## Funding Support for Singapore Citizen (SC) Students

- For SC students who are on MOE Financial Assistance Scheme or whose family's monthly income meets the following criteria:

Gross Household Income (GHI)  $\leq$  \$3,000, or

Per Capita Income (PCI)  $\leq$  \$750

the school will subsidise **50%** of device bundle cost or **\$350**, whichever is lower.

- The remaining amount will be payable from the students' Edusave account. If there is insufficient balance in the students' Edusave account for the remaining amount, school will provide additional subsidy so that the cash out-of-pocket (OOP) is \$0.

# Funding Scenario: Student A (SC)



**Apple iPad  
9<sup>th</sup> Gen  
(64GB Wi-Fi)**

Student A (SC on MOE FAS) GHI ≤ \$3,000 or PCI ≤ \$750	
Device Bundle Cost	<b>\$857.50</b>
Student Subsidy	<b>\$350.00</b>
Available Edusave Balance <i>(After setting aside for 2<sup>nd</sup>-tier misc fees)</i>	\$200.00 before deduction \$200.00 will be deducted
Additional Subsidy	<b>\$307.50</b>
Cash Out-of-pocket	<b>\$0.00</b>

For more details on financial assistance, please approach the school.  
Each student would receive a personalised bill subsequently.

## Funding Support for Singapore Citizen (SC) Students

- For SC students whose family's monthly income is:  
 $\$3,000 < \text{Gross Household Income (GHI)} \leq \$4,400$ , or  
 $\$750 < \text{Per Capita Income (PCI)} \leq \$1,100$   
the school will subsidise **30%** of device bundle cost or **\$200**, whichever is lower.
- The remaining amount will be payable from the students' Edusave account. If there is insufficient balance in the students' Edusave account for the remaining amount, school will provide additional subsidy so that the cash out-of-pocket (OOP) is not more than \$50.

# Funding Scenario: Student B (SC)



**Apple iPad  
9<sup>th</sup> Gen  
(64GB Wi-Fi)**

Student B (Non MOE-FAS SC from lower income family) \$3,000 < GHI ≤ \$4,400 or \$750 < PCI ≤ \$1,100	
Device Bundle Cost	<b>\$857.50</b>
Student Subsidy	<b>\$200.00</b>
Available Edusave Balance <i>(After setting aside for 2<sup>nd</sup>-tier misc fees)</i>	\$200.00 before deduction \$200.00 will be deducted
Additional Subsidy	<b>\$407.50</b>
Cash Out-of-pocket	<b>\$50.00</b>

For more details on financial assistance, please approach the school.  
Each student would receive a personalised bill subsequently.

## **Funding Support for Singapore Citizen (SC) Students**

- SC students whose family's monthly Gross Household Income (GHI) > \$4,400 or monthly Per Capita Income (PCI) > \$1,100, no subsidy will be provided.

Parents/Guardians can use their child's/ward's Edusave or cash to defray the device bundle cost.

# Funding Scenario: Student C (SC)



**Apple iPad  
9<sup>th</sup> Gen  
(64GB Wi-Fi)**

Student C (Not Eligible for Subsidy) GHI > \$4,400 or PCI > \$1,100	
Device Bundle Cost	<b>\$857.50</b>
Available Edusave Balance <i>(After setting aside for 2<sup>nd</sup>-tier misc fees)</i>	<b>\$200.00 (or more, depending on current Edusave Balance)</b> \$200.00 (or more) will be deducted
Cash Out-of-pocket	<b>\$657.50 (or less, depending on current Edusave Balance)</b>

For more details on financial assistance, please approach the school.  
Each student would receive a personalised bill subsequently.

# Funding Support for Non-Singapore Citizen Students

- Permanent residents (PR) and international students (IS) who need support could apply for subsidies, particularly those whose Gross Household Income (GHI) is below \$4400 or Per Capita Income (PCI)<sup>#</sup> is below \$1100.
- For more details, please approach the school.

**What's Next?**

## For Singapore Citizens (SC) Students

Time Frame	Activity
13 January to <u>27 January</u> (Deadline)	Submit “Letter to Parents for Procurement” which includes the following annexes: <ul style="list-style-type: none"><li>• Intent to purchase</li><li>• Use of Edusave</li></ul>
Apr 2022	Collection of devices by students

## For Permanent Residents / International Students

Time Frame	Activity
13 January to <u>27 January</u> (Deadline)	Submit Letter to “Parents for Procurement” which includes the following annexes: <ul style="list-style-type: none"><li>• Intent to purchase</li></ul>
	Parent/Guardian to make payment via Giro/PayNow [ <i>electronic means</i> ]
Apr 2022	Collection of devices by students

WHAT'S NEXT?

# Letter to Parents for Procurement

**singpass**

Parents with Singpass can access the Letter to Parents for Procurement to indicate your consent via the following link:

<https://go.gov.sg/pdlpadmin>



## FOR PARENTS

Purchase of Devices (2023)	
1. Information on device	Briefing during 2023 Sec 1 PTC <a href="#">Frequently Asked Questions (FAQ)</a>
2. Giving Consent for Purchase	Click <a href="#">here</a> to give consent (Singpass Login Required)
3. Insurance & Warranty Info	Click <a href="#">here</a> for more information
4. SOPs for device issues	Click <a href="#">here</a> for more information
5. Other Useful Information	<a href="#">Service Centre &amp; Vendor Contacts</a>

*Information above correct as of 6 Jan 2023*

\* Parents/Guardians without Singpass can request for the hardcopy letter via your child's/ward's form teacher.

# Collection of Devices

Your child/ward will be collecting his/her device in school in **April Term 2 2023**.

If you would like to verify the condition of the device during collection with your child/ward:

- You may arrange to collect the device **at the contractor's service / collection centre\*** or appoint an adult proxy to do so.
- Your child/ward would need to bring the device to school and arrange for the school's IT department to install the DMA.

Please approach the school for further advice or clarification if you would like to make this arrangement.

\* Parents/Guardians (or adult proxy) will **not** be able to collect the PLD from the school.

# Important Contacts / Helplines

To access / find out more about...	Contact / Helpline
This deck of slides	<a href="http://www.changkatchangisec.moe.edu.sg">www.changkatchangisec.moe.edu.sg</a> *NDLP page
Edusave balance	6260 0777
Financial assistance	<b>General Office: 6785 9790</b>

## FOR PARENTS

Purchase of Devices (2023)	
1. Information on device	Briefing during 2023 Sec 1 PTC <a href="#">Frequently Asked Questions (FAQ)</a>
2. Giving Consent for Purchase	Click <a href="#">here</a> to give consent (Singpass Login Required)
3. Insurance & Warranty Info	Click <a href="#">here</a> for more information
4. SOPs for device issues	Click <a href="#">here</a> for more information
5. Other Useful Information	<a href="#">Service Centre &amp; Vendor Contacts</a>

# Thank you





Ministry of Education  
SINGAPORE